

## Rope Pear Socket Nemag

---

### Product information



The Nemag Rope Pear Socket is designed to, in combination with the Nemag Quick Release Link, smoothly pass over cable sheaves. The life span of the Nemag Rope Pear Socket generally surpasses that of the steel wire rope. The Rope Pear socket can be fitted by casting with a 2-component casting mass without the need for outside assistance, and ensures a strong connection. Nemag Rope Pear Sockets are suited to any type of steel wire rope.

... [Read more](#)

---

**Material:** High grade casted steel.

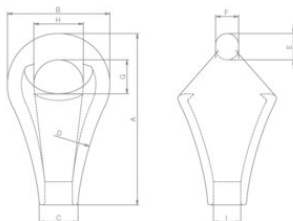
**Marking:** Manufacturers logo, size and batch number.

**Warning:** The specified capacities shown are for grab operation. For other applications use safety factor 5:1

**Safety factor:** 5:1

## Rope Pear Socket Nemag

### Blueprint



### Technical data

Part code	Code	Rope Ø range mm	WLL ton	MBL	A mm	B mm	C mm	D mm	E mm	F mm	G mm	H mm	I mm	Weight kg
122101100120	RP-1	10-11	1.5	10	-	-	-	-	-	-	-	-	-	0.4
122101300120	RP-2	12-13	2	14	95	56	25	195	15.5	13.5	22	25	16	0.4
122101500120	RP-3	14-15	2.5	17.5	109	64	28	220	17.5	15.5	24	29	19	0.6
122101700120	RP-4	16-17	3	22.5	123	70	31	220	19.5	17.5	26	31	21	0.9
122101900120	RP-5	18-19	4.5	27.5	135	84	33	245	21	19	30	42	23	1.3
122102100120	RP-6	20-21	5	35	152	84	36	310	23	21	33	38	26	1.5
122102400120	RP-7	22-24	7	42.5	166	100	40	310	26	23	37	48	30	2.2
122102700120	RP-8	25-27	8	52.5	186	100	43	350	28	25	39	44	32	2.4
122103000120	RP-9	28-30	11	70	202	120	45	350	32	28	40	58	35	3.7
122103300120	RP-10	31-33	13	85	222	120	52	445	32	28.5	45	56	39	4.1
122103600120	RP-11	34-36	15	95	239	142	55	445	36	31.5	50	70	42	5.9
122103900120	RP-12	37-39	17	110	264	142	60	495	39	34.5	51	64	45	6.7
122104200120	RP-13	40-42	21	125	285	166	63	555	43	36.5	59	80	48	9.3
122104500120	RP-14	43-45	26	155	312	166	68	595	47	40	62	72	51	10.5
122104800120	RP-15	46-48	30	180	337	170	75	595	51	44	66	68	55	12.1
122105600120	RP-17	52-56	42.5	240	400	220	84	880	60	54	75	90	63	21.3

## Rope Pear Socket Nemag

### Combination of the Nemag Rope Pear Socket with Nemag Quick Release Link

A Rope Pear Socket can be fitted to a Quick Release Link of the same size, or to a link with a different size as indicated in table

Pear code:	Link code:
RP-2	
RP-3	RL-4
RP-4	RL-4 / RL-5
RP-5	RL-4 / RL-5 / RL-6
RP-6	RL-5 / RL-6 / RL-7
RP-7	RL-6 / RL-7 / RL-8 / RL-9
RP-8	RL-7 / RL-8 / RL-9
RP-9	RL-8 / RL-9 / RL-10
RP-10	RL-9 / RL-10 / RL-11
RP-11	RL-10 / RL-11 / RL-12
RP-12	RL-11 / RL-12 / RL-13
RP-13	RL-12 / RL-13 / RL-14
RP-14	RL-13 / RL-14 / RL-15
RP-15	RL-14 / RL-15
RP-17	RL-17