

## Weld-on Lifting Point TAPS-E

### Product information



The JDT ENORM TAPS-E is a weld-on attachment point designed for lifting and lashing applications in industrial environments. It provides a permanent anchoring solution for steel structures, lifting beams, machinery, and fabricated assemblies where defined load attachment points are required.

The compact welded design supports reliable load alignment during lifting operations.

#### Best used for:

- Permanent lifting points on welded steel constructions
- Industrial lifting and lashing applications with defined attachment locations

#### Product benefits:

- Weld-on attachment point for permanent integrated lifting locations
- Suitable for lifting and lashing applications in industrial environments
- 180° swivel shackle supports alignment with load direction
- Compact forged construction helps reduce installation space requirements
- Available in WLL capacities from 1.4 t to 26.5 t
- Optional RFID chip supports inspection traceability and asset identification
- Welding specifications available for qualified installation procedures

... [Read more](#)

**Marking:** According to standard, CE-marked, UKCA-marked

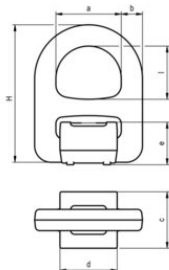
**Temperature range:** -20°C up to +400°C

**Standard:** EN 1677-1

**Safety factor:** 4:1

## Weld-on Lifting Point TAPS-E

### Blueprint



### Technical data

Part code	Code	WLL ton	EWL mm	a mm	b mm	c mm	d mm	e mm	l mm	H mm	Weight kg
4215382901000	TAPS-E 1.4	1.4	40	38	13	34	34	27	40	91	0.43
4215382902000	TAPS-E 2.5	2.5	40	40	14	34	34	27	40	91	0.47
42150382904000	TAPS-E 4	4	52	56	22	46	49	34	52	123	1.24
4215382906000	TAPS-E 6.7	6.7	63	67	22	55	59	41	63	145	1.96
42150382910000	TAPS-E 10	10	65	80	26	69	70	52	65	168	3.51
42150382912000	TAPS-E 12.5	12.5	80	90	28	74	80	56	80	189	4.51
42150382916000	TAPS-E 16	16	90	100	30	80	90	59	90	205	5.74
42150382919000	TAPS-E 19	19	90	100	32	94	90	66	90	220	6.94
42150382926000	TAPS-E 26.5	26.5	175	170	52	130	140	103	175	380	28.7