

Vacuum Beam AERO-TIMBER

Product information



With the vacuum lifting beam AERO-TIMBER you can handle materials such as wooden beams, planks, glulam, solid structural wood and rough-sawn beams. Thanks to the selectable handle position (transversely and at the front) and specially designed suction plate concept with three vacuum chambers, it can handle materials with lengths of up to 13 meters and a width of about 8 cm.

The AERO-TIMBER is only for indoor use.

Product variants

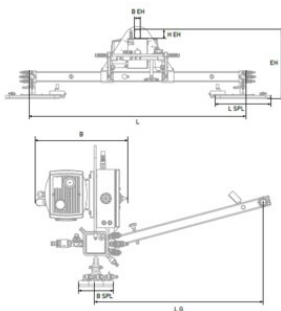
The AERO-TIMBER vacuum lifting beams are available in more versions with:

- Load capacities from 300 kg up to 600 kg
- From 2 up to 4 suction plates
- Different traverse and handle lengths etc.

... [Read more](#)

Vacuum Beam AERO-TIMBER

Blueprint



Technical data

Part code	WLL ton	Model	Handle	L SPL psc mm	B SPL mm mm	L mm	B mm	LG mm mm	H EH/B EH mm mm	EH mm	Weight kg
56051031944	0.3	AERO-TIMBER 300/2M3K/2000	Front	560	180	2,000	350	1500-2000	92x60	724	124
56051031952	0.3	AERO-TIMBER 300/2M3K/2000-ST	Horizontal	560	180	2,000	480	900-1280	92x60	724	155
56051031960	0.6	AERO-TIMBER 600/4M3K/4000	Front	560	180	4,000	350	1500-2000	120x80	959	230
56051031968	0.6	AERO-TIMBER 600/4M3K/4000-ST	Horizontal	560	180	4,000	480	900-1280	120x80	959	265