

Open Spelter Sockets with Bolt and Nut OSS B

Product information



Quenched and tempered cast steel range steel wire rope sockets for embedment with cast compound with mechanical values (Charpy-V > 42 Joule /-20°C) for tough and low temperature use. For wire rope diameter 6 - 203 mm (1/4" - 8").

2 surface finishes available:

- Model OSS B: blue painted. (OSS 196 - OSS 100 only hot dipped galvanized)
- Model OSS B.GAL: Hot dipped galvanized.

Features:

- Bolt securing by nut and cotter pin.
- All spelter sockets have a 100% efficiency.
- Also available with pin + cotter pin (type OSS P)

... [Read more](#)

Material: Quenched and tempered cast steel

Marking: Size, wire rope diameter and batch or serial number.

Temperature range: From - 40°C up to +110°C - 100% capacity range.

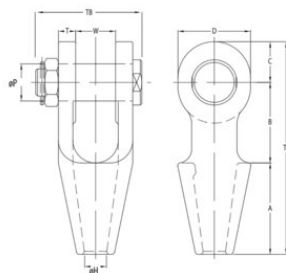
Finish: OSS B blue painted - OSS BGALV : Hot dipped galvanized.

Note: For intermediate rope diameter select fittings with nearest following size.

Warning: Compare the spelter's and the wire rope's minimum breaking load.

Open Spelter Sockets with Bolt and Nut OSS B

Blueprint



Technical data

| Part code | Code | Rope Ø range mm | MBL ton | Finish | Strand Ø mm | A mm | B mm | C mm | D mm | Ø H mm | Ø P mm | T mm | TLmm mm | TB mm | W mm | Weight kg |
|--------------|-------------|-----------------|---------|------------|-------------|------|------|------|------|--------|--------|------|---------|-------|------|-----------|
| 122100700252 | OSS196B.GAL | 6-7 | 8 | Galvanized | - | 50 | 40 | 19 | 34 | 9 | 16 | 9 | 109 | 62 | 19 | 0.5 |
| 122101000252 | OSS197B.GAL | 8-10 | 12 | Galvanized | - | 57 | 45 | 22 | 42 | 13 | 21 | 11 | 124 | 75 | 21 | 0.8 |
| 122101600252 | OSS199B.GAL | 14-16 | 25 | Galvanized | 13 | 76 | 63 | 32 | 58 | 18 | 30 | 14 | 171 | 96 | 32 | 1.9 |
| 122101900252 | OSS100B.GAL | 18-19 | 40 | Galvanized | 14-16 | 89 | 76 | 40 | 70 | 22 | 35 | 16 | 205 | 107 | 38 | 3.1 |
| 122102200255 | OSS104B | 20-22 | 55 | Painted | 18-19 | 101 | 89 | 45 | 80 | 25 | 41 | 19 | 235 | 123 | 44 | 4.7 |
| 122102200252 | OSS104B.GAL | 20-22 | 55 | Galvanized | 18-19 | 101 | 89 | 45 | 80 | 25 | 41 | 19 | 235 | 123 | 44 | 4.7 |
| 122102600255 | OSS108B | 23-26 | 75 | Painted | 20-22 | 114 | 101 | 60 | 104 | 29 | 51 | 22 | 275 | 141 | 51 | 8 |
| 122102600252 | OSS108B.GAL | 23-26 | 75 | Galvanized | 20-22 | 114 | 101 | 60 | 104 | 29 | 51 | 22 | 275 | 141 | 51 | 8 |
| 122103000255 | OSS111B | 27-30 | 90 | Painted | 23-26 | 127 | 114 | 65 | 114 | 33 | 57 | 25 | 306 | 160 | 57 | 12 |
| 122103000252 | OSS111B.GAL | 27-30 | 90 | Galvanized | 23-26 | 127 | 114 | 65 | 114 | 33 | 57 | 25 | 306 | 160 | 57 | 12 |
| 122103600255 | OSS115B | 31-36 | 125 | Painted | 27-28 | 139 | 127 | 72 | 126 | 39 | 63 | 28 | 338 | 165 | 63 | 16 |
| 122103600252 | OSS115B.GAL | 31-36 | 125 | Galvanized | 27-28 | 139 | 127 | 72 | 126 | 39 | 63 | 28 | 338 | 165 | 63 | 16 |
| 122103900255 | OSS118B | 37-39 | 150 | Painted | 30-32 | 152 | 162 | 80 | 142 | 42 | 70 | 30 | 394 | 199 | 76 | 23 |
| 122103900252 | OSS118B.GAL | 37-39 | 150 | Galvanized | 30-32 | 152 | 162 | 80 | 142 | 42 | 70 | 30 | 394 | 199 | 76 | 23 |
| 122104200255 | OSS120B | 40-42 | 170 | Painted | 33-35 | 165 | 165 | 88 | 156 | 45 | 76 | 33 | 418 | 209 | 76 | 28 |
| 122104200252 | OSS120B.GAL | 40-42 | 170 | Galvanized | 33-35 | 165 | 165 | 88 | 156 | 45 | 76 | 33 | 418 | 209 | 76 | 28 |
| 122104800255 | OSS125B | 43-48 | 225 | Painted | 36-40 | 191 | 178 | 100 | 176 | 52 | 89 | 39 | 469 | 237 | 89 | 43 |
| 122104800252 | OSS125B.GAL | 43-48 | 225 | Galvanized | 36-40 | 191 | 178 | 100 | 176 | 52 | 89 | 39 | 469 | 237 | 89 | 43 |
| 122105400255 | OSS128B | 49-54 | 280 | Painted | 42-45 | 216 | 228 | 108 | 194 | 59 | 95 | 45 | 552 | 263 | 101 | 62 |
| 122105400252 | OSS128B.GAL | 49-54 | 280 | Galvanized | 42-45 | 216 | 228 | 108 | 194 | 59 | 95 | 45 | 552 | 263 | 101 | 62 |
| 122106000255 | OSS130B | 55-60 | 360 | Painted | 46-48 | 229 | 254 | 120 | 210 | 64 | 108 | 53 | 603 | 298 | 113 | 90 |
| 122106000252 | OSS130B.GAL | 55-60 | 360 | Galvanized | 46-48 | 229 | 254 | 120 | 210 | 64 | 108 | 53 | 603 | 298 | 113 | 90 |

Open Spelter Sockets with Bolt and Nut OSS B

Technical data

| Part code | Code | Rope Ø range mm | MBL ton | Finish | Strand Ø mm | A mm | B mm | C mm | D mm | Ø H mm | Ø P mm | T mm | TLmm mm | TB mm | W mm | Weight kg |
|--------------|-------------|-----------------|---------|------------|-------------|------|------|------|------|--------|--------|------|---------|-------|------|-----------|
| 122106800255 | OSS132B | 61-68 | 425 | Painted | 50-54 | 248 | 273 | 133 | 236 | 75 | 121 | 60 | 654 | 330 | 127 | 123 |
| 122106800252 | OSS132B.GAL | 61-68 | 425 | Galvanized | 50-54 | 248 | 273 | 133 | 236 | 75 | 121 | 60 | 654 | 330 | 127 | 123 |
| 122107500255 | OSS135B | 69-75 | 460 | Painted | 56-62 | 279 | 279 | 138 | 240 | 81 | 127 | 73 | 696 | 359 | 133 | 159 |
| 122107500252 | OSS135B.GAL | 69-75 | 460 | Galvanized | 56-62 | 279 | 279 | 138 | 240 | 81 | 127 | 73 | 696 | 359 | 133 | 159 |
| 122108000255 | OSS138B | 76-80 | 560 | Painted | 64-67 | 305 | 286 | 146 | 252 | 88 | 133 | 76 | 737 | 380 | 146 | 190 |
| 122108000252 | OSS138B.GAL | 76-80 | 560 | Galvanized | 64-67 | 305 | 286 | 146 | 252 | 88 | 133 | 76 | 737 | 380 | 146 | 190 |
| 122108600255 | OSS140B | 81-86 | 625 | Painted | 69-76 | 330 | 298 | 160 | 290 | 92 | 140 | 79 | 788 | 397 | 159 | 230 |
| 122108600252 | OSS140B.GAL | 81-86 | 625 | Galvanized | 69-76 | 330 | 298 | 160 | 290 | 92 | 140 | 79 | 788 | 397 | 159 | 230 |
| 122109300255 | OSS142B | 87-93 | 720 | Painted | 78-86 | 356 | 318 | 178 | 320 | 99 | 152 | 83 | 852 | 419 | 171 | 287 |
| 122109300252 | OSS142B.GAL | 87-93 | 720 | Galvanized | 78-86 | 356 | 318 | 178 | 320 | 99 | 152 | 83 | 852 | 419 | 171 | 287 |
| 122110200255 | OSS144B | 94-102 | 875 | Painted | 88-96 | 381 | 343 | 190 | 350 | 108 | 178 | 89 | 914 | 451 | 191 | 377 |
| 122110200252 | OSS144B.GAL | 94-102 | 875 | Galvanized | 88-96 | 381 | 343 | 190 | 350 | 108 | 178 | 89 | 914 | 451 | 191 | 377 |
| 122111500255 | OSS146B | 108-115 | 1,200 | Painted | 98-110 | 450 | 480 | 215 | 400 | 129 | 195 | 100 | 1,145 | 506 | 205 | 548 |
| 122111500252 | OSS146B.GAL | 108-115 | 1,200 | Galvanized | 98-110 | 450 | 480 | 215 | 400 | 129 | 195 | 100 | 1,145 | 506 | 205 | 548 |
| 122113000255 | OSS150B | 120-130 | 1,400 | Painted | 112-124 | 500 | 500 | 250 | 450 | 147 | 220 | 110 | 1,250 | 546 | 225 | 766 |
| 122113000252 | OSS150B.GAL | 120-130 | 1,400 | Galvanized | 112-124 | 500 | 500 | 250 | 450 | 147 | 220 | 110 | 1,250 | 546 | 225 | 766 |
| 122114000255 | OSS155B | 135-140 | 1,600 | Painted | 125-132 | 540 | 497 | 263 | 480 | 157 | 240 | 140 | 1,300 | 623 | 230 | 1,081 |
| 122114000252 | OSS155B.GAL | 135-140 | 1,600 | Galvanized | 125-132 | 540 | 497 | 263 | 480 | 157 | 240 | 140 | 1,300 | 623 | 230 | 1,081 |
| 122115300255 | OSS160B | 142-153 | 2,000 | Painted | 133-143 | 585 | 505 | 275 | 500 | 171 | 255 | 140 | 1,365 | 655 | 250 | 1,200 |
| 122115300252 | OSS160B.GAL | 142-153 | 2,000 | Galvanized | 133-143 | 585 | 505 | 275 | 500 | 171 | 255 | 140 | 1,365 | 655 | 250 | 1,200 |
| 122116500255 | OSS165B | 154-165 | 2,220 | Painted | 144-154 | 630 | 530 | 300 | 550 | 185 | 275 | 150 | 1,460 | 685 | 260 | 1,474 |
| 122116500252 | OSS165B.GAL | 154-165 | 2,220 | Galvanized | 144-154 | 630 | 530 | 300 | 550 | 185 | 275 | 150 | 1,460 | 685 | 260 | 1,474 |
| 122117800255 | OSS170B | 166-178 | 2,500 | Painted | 155-166 | 680 | 570 | 310 | 570 | 199 | 295 | 150 | 1,560 | 715 | 280 | 1,655 |
| 122117800252 | OSS170B.GAL | 166-178 | 2,500 | Galvanized | 155-166 | 680 | 570 | 310 | 570 | 199 | 295 | 150 | 1,560 | 715 | 280 | 1,655 |
| 122119100255 | OSS175B | 180-191 | 2,800 | Painted | 167-179 | 725 | 600 | 325 | 600 | 213 | 310 | 155 | 1,650 | 750 | 300 | 1,956 |
| 122119100252 | OSS175B.GAL | 180-191 | 2,800 | Galvanized | 167-179 | 725 | 600 | 325 | 600 | 213 | 310 | 155 | 1,650 | 750 | 300 | 1,956 |
| 122120400255 | OSS180B | 192-204 | 3,200 | Painted | 180-191 | 775 | 620 | 345 | 640 | 229 | 330 | 160 | 1,740 | 790 | 320 | 2,303 |
| 122120400252 | OSS180B.GAL | 192-204 | 3,200 | Galvanized | 180-191 | 775 | 620 | 345 | 640 | 229 | 330 | 160 | 1,740 | 790 | 320 | 2,303 |