

## Boltable lifting eyes

---

### Product information



Boltable lifting eye for lifting. Delivered without bolts. Bolt grade must be min. 8.8  
... [Read more](#)

---

**Material:** Steel

**Marking:** According to standard, CE-marked

**Temperature range:** -40°C - (+)200°C

**Finish:** Painted, yellow

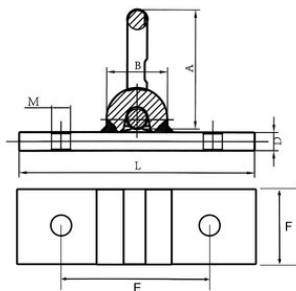
**Standard:** EN 1677-1

**Note:** No side loading

**Safety factor:** 4:1

## Boltable lifting eyes

### Blueprint



### Technical data

Part code	WLL ton	Base dimensions mm	A mm	B mm	D, mm	Mmm mm	L mm	E mm	F mm	Weight kg
4215NS8PUL1	1	155 x 51	78	40	12	12.5	155	100	51	1.1
4215NS8PUL2	2	155 x 51	80.5	40	14	14.5	155	100	51	1.2
4215NS8PUL3	3	155 x 51	94	46.5	16	16.5	155	100	51	1.5
4215NS8PUL5	5	180 x 60	118	60	20	22.5	180	120	60	2.6
4215NS8PUL8	8	220 x 62	141	63	26	26.5	220	145	62	4.9